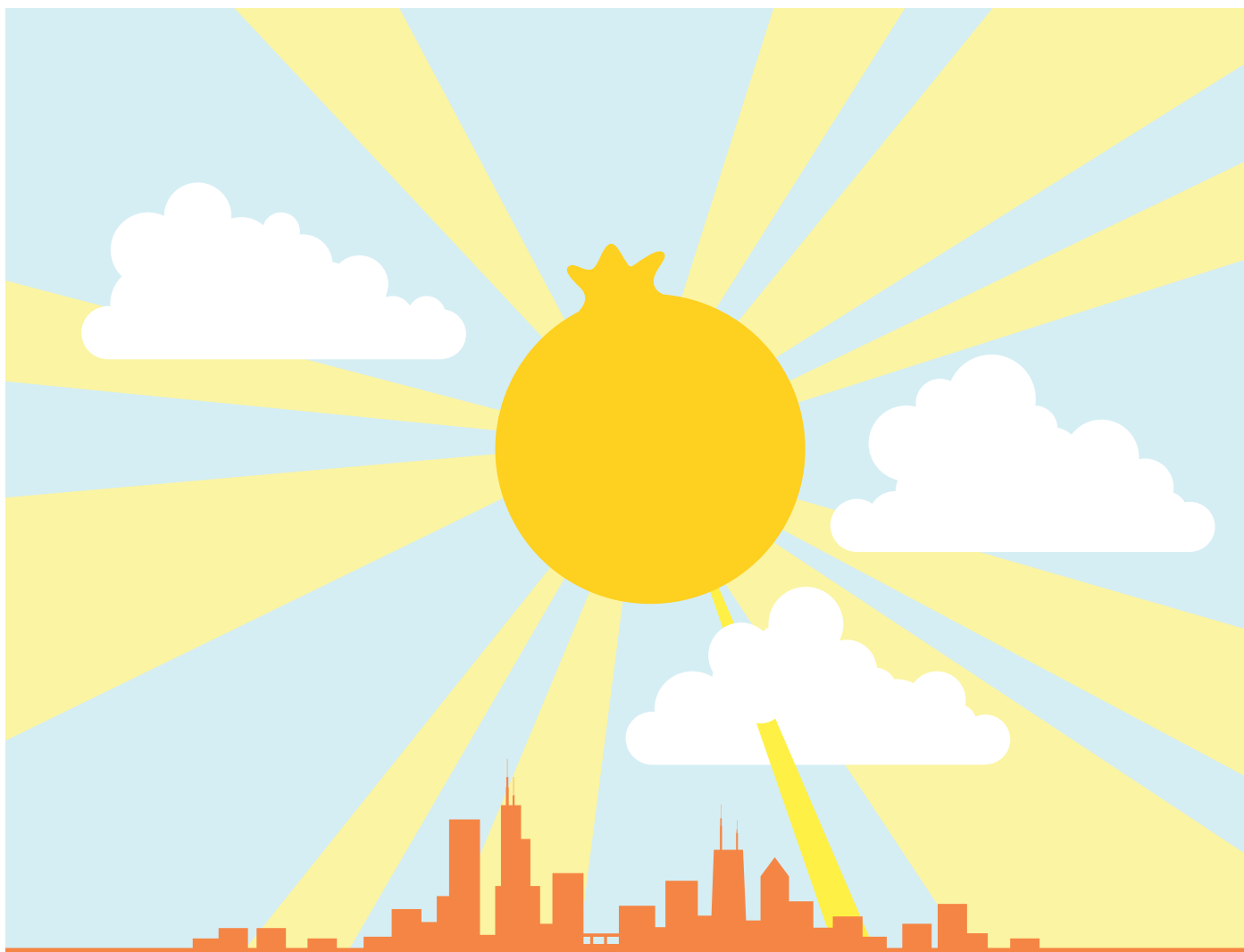


state of the mishkan

TISHREI 5778 • SEPTEMBER 2017

Reimagining and reinvigorating Judaism in Chicago and beyond.



mishkan
CHICAGO
inspired, down-to-earth Judaism

Welcome to Mishkan. We're glad you're here.



The first Mishkan email, sent in September of 2011, began with the audacious question, “What might happen if....”

What if we approach Judaism with the same creativity and experimental attitude that we'd bring to a start-up organization? What if our services marry post-modern irreverence and traditional devotion, creating a radically inclusive sacred space that meets people where they are— financially, locationally, socially, and spiritually? What if Jewish prayer were as satisfying as a good yoga class, as uplifting as your favorite rock show, and as subversive and smart as a page of Talmud— harnessing Judaism's ancient roots with creativity and joy, to reveal its prophetic moral voice?

We wanted to find out. At our first service we were 65 people in a Lincoln Park living room, all volunteer-run, with borrowed prayer books and a hunch that we might be onto something. Six years later we've touched thousands of people between services, classes, workshops, partnerships, online music, and live festivals. You'll read about all that in this booklet.

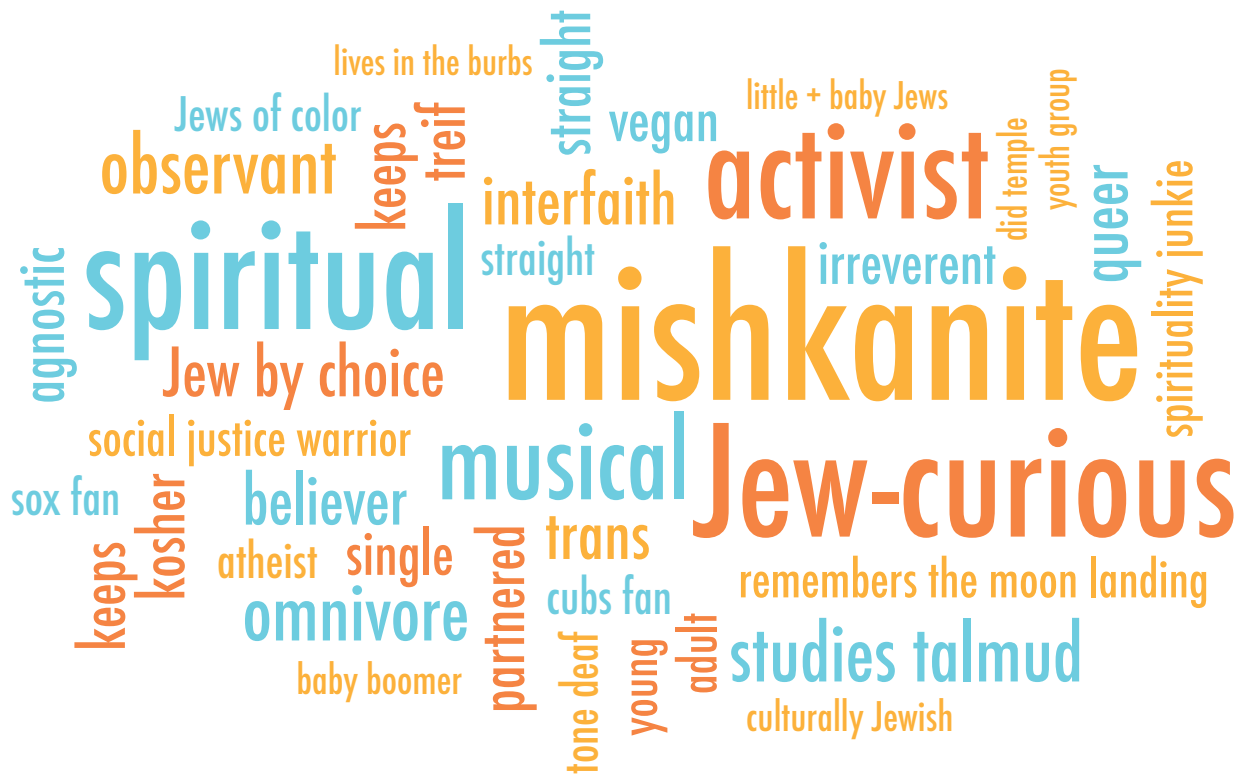
On a personal level, what keeps me excited is that the magic, anticipation, intellectual quest, and spiritual energy that filled the room that first night, still buzzes through our community and continues to grow every day. As the world rages in chaos, and despair beckons with its gnarly finger, this spiritual community stands as a counter-testimony, bringing growing numbers of people into a Jewish space that exudes light, learning, inclusivity, justice, and love. Whoever you are and wherever you've come from, we welcome you to this holy experiment in inspired, down-to-earth community building called Mishkan.

L'shannah tovah— may you be inscribed for a year of health, love and inspiration,
Rabbi Lizzi Heydemann

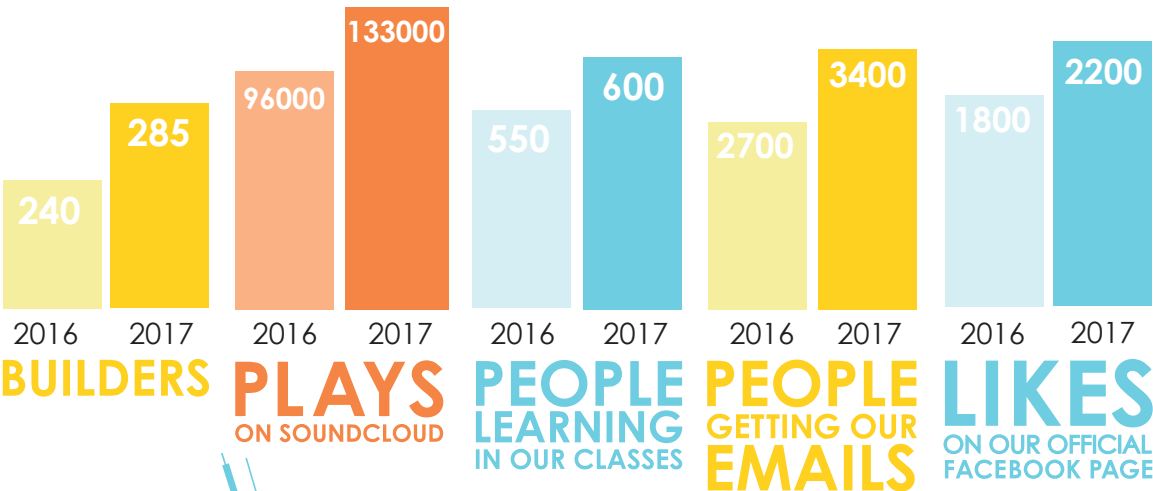


Radically inclusive.

Mishkan creates a community as colorful and diverse as Jews are in the 21st century. Mishkan brings together young adults (look around, you'll notice a few), folks who identify as LGBTQ, Jews-by-choice, interfaith couples and families, and spiritual seekers of all ages and backgrounds, creating safe space to be 'out' about what makes us who we are. The common thread is a shared vision of community built around authentic and deep prayer, intellectually honest and high-level learning, and down-to-earth Jewish spirituality that motivates activism in our own lives and in the world to create more light, more healing, more justice and more joy.

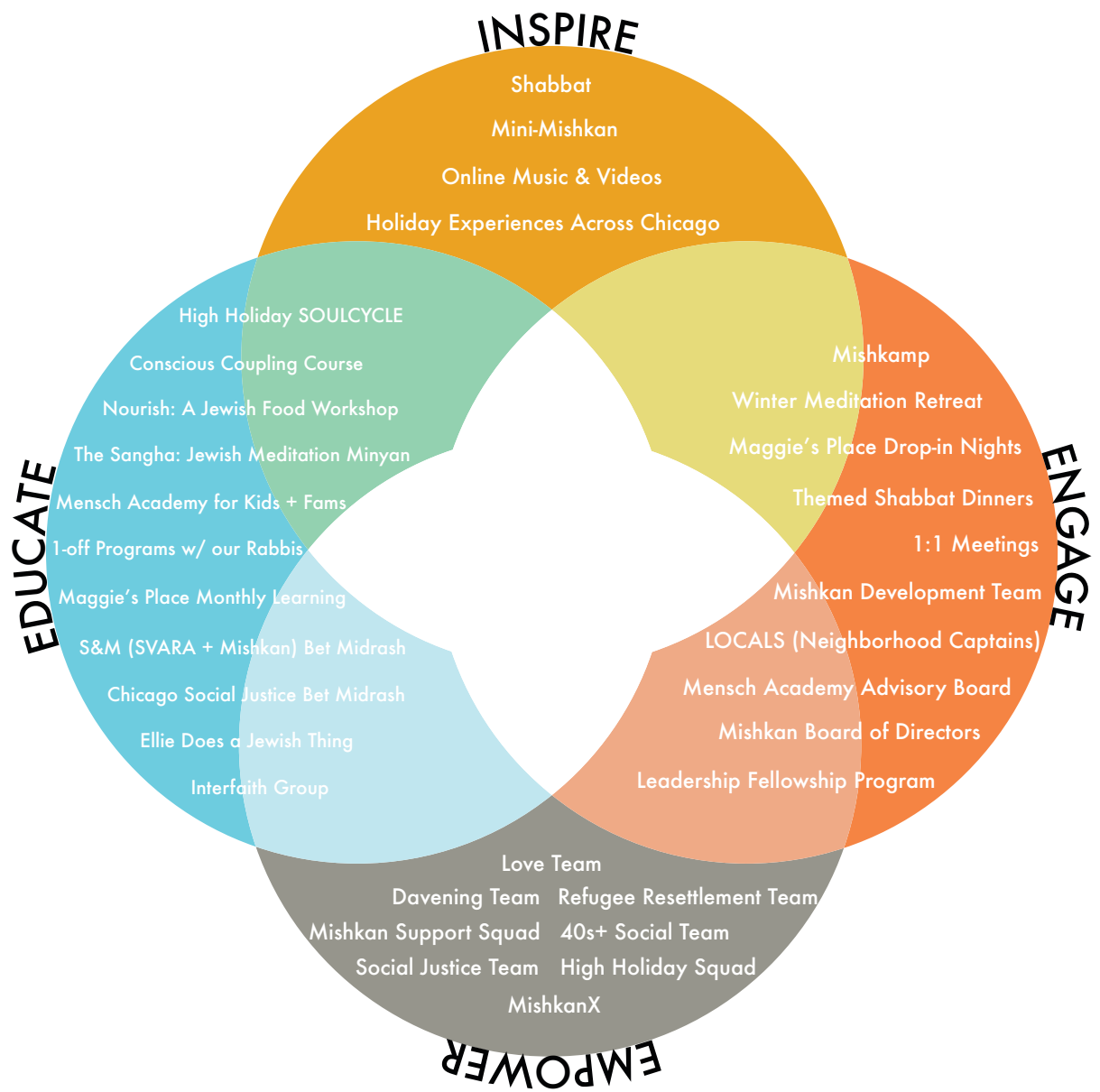


Growth this year, by the numbers...



Growing broad, going deep.

Our mission is to **reimagine** and **reinvigorate** Jewish life in Chicago and beyond.



Headlines of 5777.



SLINGSHOT '16-'17 (again!) Featured as one of the few organizations in Chicago to be named in the National Slingshot Guide for Jewish innovation.



THE JEWISH EMERGENT NETWORK (JEN) One of seven path-breaking Jewish communities nationally, Mishkan is in our second year hosting Rabbi Lauren Henderson, our JEN Rabbinic Fellow. We look forward to seeing her spread her wings and interviewing our next fellow in early 2018.



UPSTART & ACCELERATE Mishkan is thrilled to be a part of Upstart, a national organization inspiring and advancing innovative ideas that contribute to the growth and vitality of Jewish life, AND Project Accelerate, a capacity building program that works with high performing organizations poised to enter a new stage in their growth and development.



MENSCH ACADEMY & FAMILY PROGRAMS With 36 students expected in the 17-18 academic year, Mensch Academy has hit the ground running. In addition, our littlest Jews and baby Jews get their dose of inspired, down-to-earth Judaism every Shabbat morning Mishkan meets with Mini-Mishkan, as well as at Early Family Friday Night Dinners and Sunday holiday programs.



WE GREW, BIG TIME Get Higher 5773: 600 people; 5774: 900 people; 5775: 1200 people; 5776: 1450 people, 5777: 1700 people, this year: 1800 Holy Moly! We also grew our team to eight full time staff members and five part-time staff.



PARTNERSHIPS This has been a year of collaborating, optimizing space, talent and bringing the best of spiritual and intellectual Chicago to you. This year we partnered with Anshe Emet Synagogue (Conservative), Anshe Sholom (Orthodox), AVODAH: The Jewish Service Corp, Moishe House, Orot: Center for New Jewish Learning, SVARA: A Traditionally Radical Yeshiva, JCC 20s & 30s, HIAS, Jewish Council on Urban Affairs, ONE Northside, The Selfhelp Home & more.



LAUNCHED THE MISHKAN SUPPORT SQUAD The folks at Mishkan helping support our community in times of joy, need, and sadness.



LAUNCHED MAGGIE'S PLACE, a wellness center at Mishkan Chicago dedicated to building community through a holistic approach to wellness— social, spiritual, mental and emotional— through learning, leadership opportunities, social community, and access to social services and resources.



MISHKAN GOES CAMPING We ran MishKamp, our very own immersive experience— a taste of Jewish summer camp for adults especially designed for people who never went to a Jewish camp, for a highly successful second year. This year we'll be rolling out a Winter Meditation Retreat. Stay tuned.

Taking care of our people.

MAGGIE'S PLACE



Maggie's Place is a wellness center based out of Mishkan Chicago's Ravenswood office, established in Maggie Miretzky's memory by the Miretzky Family. Maggie's Place has allowed us to expand our programs that support the overall health and wellness – mental, emotional, spiritual – of young adults and others through workshops, classes, access to organizational and professional resources, and the support of a community.

Maggie's Place is run by Mishkan's own Ellie Spitz, LCSW, in her role as Director of Community Engagement and Wellness. Interested in learning more or getting involved? **Email Ellie at ellie@mishkanchicago.org**

*you are of
value
you matter*

*Never cease to
be amazed. you
deserve it!!*

*endorse
yourself*

-Messages written by community members on the walls of Maggie's Place.

MISHKAN SUPPORT SQUAD

Weaving the fabric of a community that holds and supports you in times of joy, need, and sadness.

The Mishkan Support Squad is here when you need some love and in times of transition—organizing a shiva minyan, making food for folks after hospitalization or a birth, or celebrating a life milestone alongside you—getting engaged or married, landing a new job, moving, or having a baby.

Whatever you're going through, we're here to support you.



You are loved.

Engaging little, baby and growing Jews.

Mishkan is the place for deep Jewish spirituality in Chicago, for adults AND for kids. Kids and family programs at Mishkan are part of the larger Mishkan community, and are open to everyone. We give families a place to do Jewish with other families and within community.



MINI-MISHKAN & FAMILY PROGRAMS

At **Mini-Mishkan** kids 0-4 and families explore Jewish spirituality through music, story-telling, prayer and play. **Sunday Holiday Events** for kids of all ages are a time to celebrate and learn about Jewish traditions and customs together. At **Early Family Friday Night Dinners**, families gather for joyful singing, laughter, and Shabbat blessings with our rabbis before services.



MENSCH ACADEMY

Mensch Academy is inspired, down-to-earth Judaism for kids and families. At Mensch Academy, kids build character, confidence, curiosity and a sense of who they are as Jews in the world through engaging in serious Jewish learning, prayer and exploration. Respecting each person's mind and spirit, Mensch Academy is a space where kids feel loved enough and safe enough to take risks and experiment with Jewish tradition, making it their own and becoming the best versions of themselves.



*Imagine a place where kids feel **LOVED** enough and **SAFE** enough to develop their own Jewish ideas.*

Shout out: Leadership.

STAFF

We may be small but we are mighty. From our home grown local rabbi to our staff of 8 and growing, Mishkan's staff has (collective) decades of experience envisioning, growing, and sustaining community.



Rabbi Lizzi Heydemann, Rabbi & Founder

Rachel Cort, Managing Director

Rabbi Lauren Henderson, Jewish Emergent Network Rabbinic Fellow

Ellie Spitz, Director of Community Engagement and Wellness

Ilana Gleicher-Bloom, Vision Director of the Mensch Academy & Family Programs

Rachel Gray Alexander, Marketing & Communications Manager

Natalie Dibo, Rabbinic, Executive & Administrative Assistant

Rachel Goldberg, Lead Educator at Mensch Academy & Mishkan Program Coordinator

TEAMS

Shout out to the literally hundreds of people who make things happen: Love Team, 5778 High Holidays Volunteers, Mishkan Support, Davening, Development, Neighborhood LOCALS, 40s+ Social, Strategic Planning, and Social Justice. So many teams!

BOARD OF DIRECTORS

Mishkan's rocking Board of Directors is leading our organization as we grow and fulfill our mission, and in particular this year as we are undergoing a strategic planning process. James Edward Johnson (Board President), Susan Horowitz (Secretary), Lisa Portnoy (Treasurer), Jane Charney, Rabbi Lizzi Heydemann, Scott Issen, Jacob Kaufman, Daniel Riff, Mark Achler & Stephanie Goldfarb.

STRATEGIC PLANNING

We engaged Carol Henriques of HighBar Consulting to lead a process of reflecting on and reenvisioning our mission, vision and future. We spent all summer hosting a dozen focus groups, and are synthesizing our findings and rolling our strategic plan soon. Stay tuned!

LEADERSHIP FELLOWS

Our Leadership Fellowship is designed to give extraordinary young adults considering a future in Jewish leadership the opportunity to flex their muscles as a prayer leaders, teachers, and community shapers. Our current Leadership Fellows are:

Ezra Furman: A Chicago native with a passion for music and the Jewish people.

Rachel Brustein: Back in Chicago after five years of East Coast living, Rachel is excited to have conversations about feminism, theology, prayer, and more.

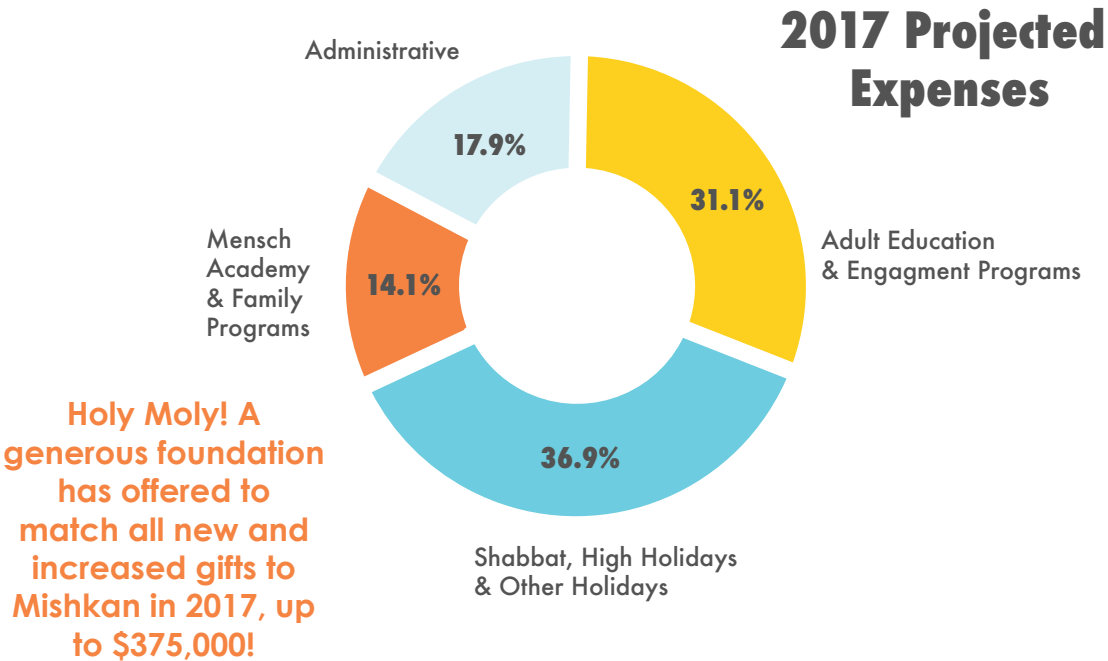
Rachel Goldberg: In addition to her role at Mensch Academy and coordinating Mishkan programs, Rachel will be contributing teachings during services, as well as facilitating an intergenerational Rosh Chodesh/ monthly new moon gathering.

Your impact.

At Mishkan, we believe that a budget is an expression of values. We express our values by investing in talented people and building great programs, and we believe that this budget reflects those priorities.

Our budget for 2017 is just over 1.1 million and we expect this budget to grow as Mishkan does. The projected expenses chart illustrates a broad overview of Mishkan's 2017 annual budget. Salaries have been distributed into each program area proportional to the needs of that category. Salaries and benefits for Mishkan staff represent 55% of our total budgeted expenses, in line with many other similar communities.

Our budget--and all the money raised to meet it--directly supports Mishkan's impact engaging, empowering, educating and inspiring the next generation.



<div>S&M Bet Midrash</div> <div>Other classes, workshops & trainings</div> <div>LOCALS</div> <div>Volunteer teams (Love Team, Social Justice Team, etc)</div> <div>One-to-one meetings</div> <div>Maggie's Place</div>	<div>Shabbat services (3/month)</div> <div>High Holidays</div> <div>Purim</div> <div>Passover</div> <div>Shavuote</div> <div>Tisha B'av</div> <div>Sukkot</div> <div>Simchat Torah</div> <div>Hanukkah</div>	<div>Food, venue rentals & supplies for mini-Mishkan, family holiday programs +</div> <div>Mensch Academy Teachers and facilitators</div> <div>Curricula and materials</div> <div>Music + educational specialists</div>	<div>Office Space</div> <div>Marketing + Publicity</div> <div>Website + Database</div> <div>Fundraising</div> <div>Professional Development</div>
--	--	---	---

Shout out: Givers.

Mishkan is generously supported by:

Mark & Marcie Achler
Jeff Aeder
Chuck Smith & Leora Baumgarten
Caryn & Jim Berman
Charney-Averbukh Family
Lynn & Jeff Coe
Bruce and Lisa Cohen
Stephanie & Anita Cohen
Margaret & Lee Cohn
Debbi & Aaron Cooper
Rona Talcott & Owen Deutsch
Jody Schneiderman & Robert Don
Lori & Monte Dube
Morris & Natalie Fisher
Judy & Abel Friedman
Sari Gluckin & Lance Friedmann
Michelle & Aidan Gilbert
Ben Halbig

Hannah Bloom-Hirschberg

& Gary Hirschberg

Jim & Ali Hirshorn

Gary & Meme Hopmayer

James & Dana Sussman Johnson

Jacob Kaufman

Vered & Jeremy Kaufman

Dr. Arielle & Belle Kerman

Lisa & Michael Kornick

Peter Kupferberg

Larry & Karen Kurtzon

Robin & Mark Le Vine

Avi Lewittes & Family

Mrs. Beatrice Mayer

Akiva Gross & Ruth Mayer

Maggie & Josh Michelson

Dr. Scott Mirowitz

Mandy & Billy Pekin

Lisa Portnoy

Susan & Marc Sacks

Andrea & Alan Solow

Josh Turnbull

Matt & Ericka Thacker

Deb & Jeff Zaluda & the Dejelaja

Foundation

Crown Family Philanthropies

Harvey L. Miller Family Foundation

Jack & Goldie Wolfe Miller Fund

Community Foundation for Jewish Education

An Anonymous Family Foundation

The Zarrow Family Foundation

Slingshot Chicago Fund

Slingshot Fund

And YOU!

Thank you.

Seriously, truly, really.

We can't do what we do
without you.



Find

MEANING

MUSIC

COMMUNITY

TORAH

TRUTH

INSPIRATION

LOVE

Hell, let's just say it,

GOD

Find yourself @

משכן mishkan
CHICAGO

inspired, down-to-earth Judaism